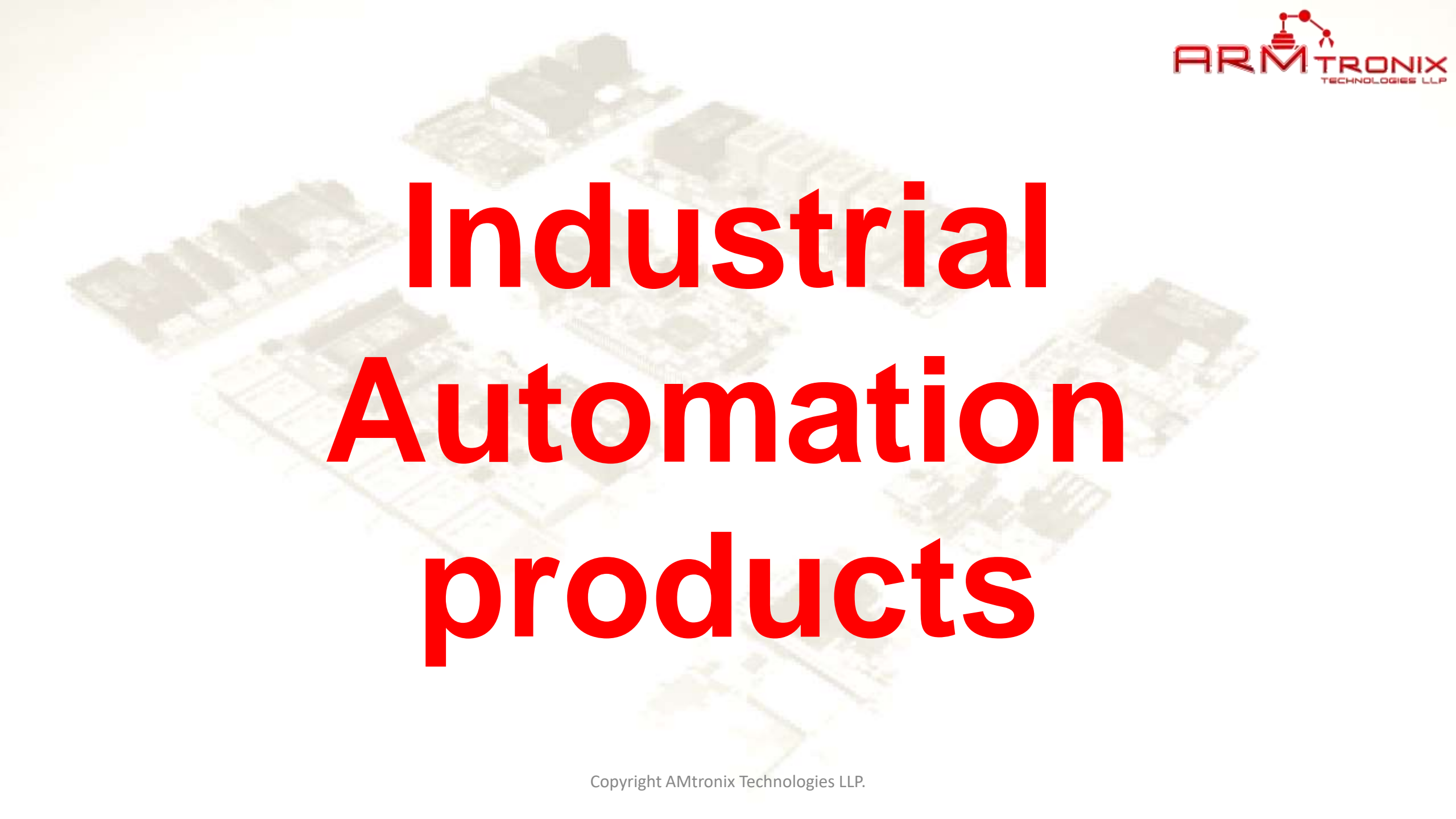


ARMTRONIX TECHNOLOGIES LLP.

Hubballi, India.

Products Catalogue

The background of the slide is a light-colored, semi-transparent image of several industrial automation products, including what appear to be PLCs and control modules, arranged in a grid-like pattern. The text is overlaid on this background.

Industrial Automation products

IA015 : Retro to IIoT

Technical Data	IA015 : Retro to IIoT
Power Input	Industry Standard 24 V DC @ 1A
Operating System	N/A
Target Systems	Beckhoff PLC and Siemens PLC
Bluetooth	v4.2 BR/EDR
Wifi	802.11 b/g/n
CAN	CAN bus 2.0
Communication	Standard 2-Wire RS485/Modbus
Digital Input	3 – Inputs, 24 V DC Tolerable.
Digital Output	3 – Outputs, 24 V DC/300mA capable, Open Collector
Analog Input	4 – Inputs, 4-20mA DC Readable.
Ethernet	IEEE 1588 Precision Time Protocol
Modbus TCP	Standard modbus protocol over ethernet port.
Mounting	Din Rail. C-Type



[Click here](#) to download technical datasheet.

IA013 : Wifi <-> RS485 <-> LoRa

Technical Data	IA013: Wifi <- > RS485 <-> LoRa
Power Input	Industry Standard 24 V DC @ 1A AC 230 V / 1A (In Different Variant)
Operating System	N/A
Target Systems	Modbus Master or Modbus Slave
Bluetooth	v4.2 BR/EDR
Wifi	802.11 b/g/n
RF	LoRa WAN
LoRa Frequency	862 - 878MHz, Configurable in program
MCU	STM32F103CBT6
RS485 / Modbus	Standard 2-Wire Modbus communication
Mounting	Screw Type
Extra Features	On-field programmable



[Click here](#) to download technical datasheet.

IA010 : Modbus to IIoT

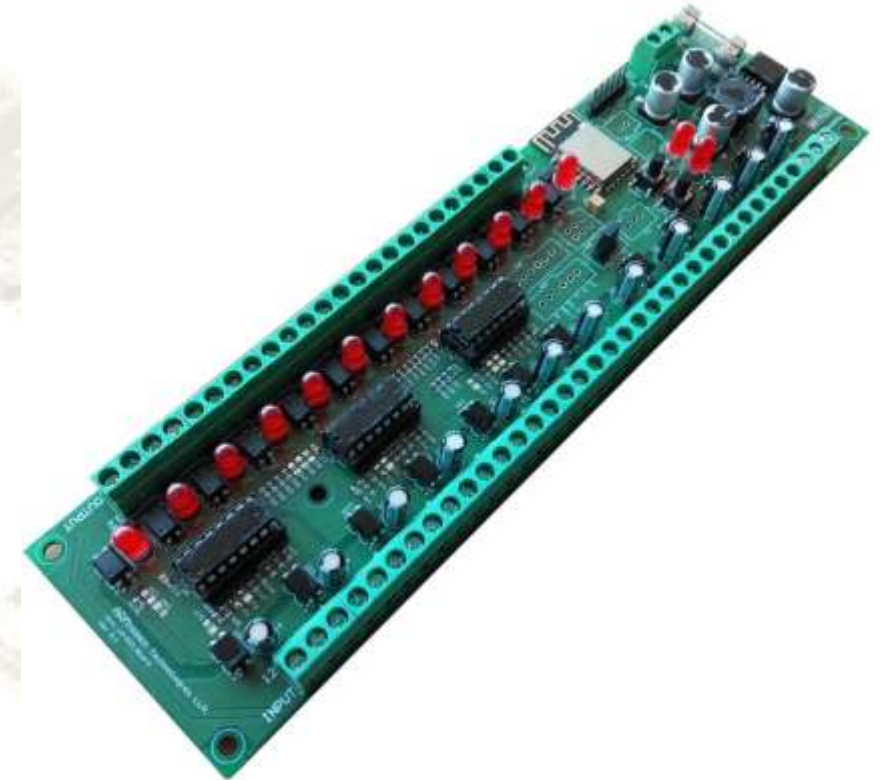
Technical Data	IA010 : Retro to IIoT
Power Input	Industry Standard 24 V DC @ 1A
Operating System	N/A
Target Systems	Programmable Logic Controller (PLC)
Bluetooth	v4.2 BR/EDR
Wifi	802.11 b/g/n
Communication	Standard 2-Wire RS485/Modbus
Digital Output	1 – Output, 24 V DC/300mA capable, Open Collector
Ethernet	IEEE 1588 Precision Time Protocol
Modbus TCP	Standard modbus protocol over ethernet port.
Mounting	Din Rail. C-Type



[Click here](#) to download technical datasheet.

IA009 : Wifi 12-DIO

Technical Data	IA009 : Wifi 12-DIO
Power Input	Industry Standard 24 V DC @ 1A
Operating System	N/A
Target Systems	MQTT Broker or Wifi Access point
Bluetooth	N/A
Wifi	802.11 b/g/n
Digital Input	12 – Inputs, 24 V DC Tolerable.
Digital Output	12 – Outputs, 24 V DC/300mA capable.
Mounting	Screw mount
Extra Features	I2C header for expansion



[Click here](#) to download technical datasheet.

IA008 : Wifi 2-DIO

Technical Data	IA008 : Wifi 2-DIO
Power Input	Industry Standard 24 V DC @ 0.5A
Operating System	N/A
Target Systems	MQTT Broker or Wifi Access point
Bluetooth	N/A
Wifi	802.11 b/g/n
Digital Input	2 – Inputs, 24 V DC Tolerable.
Digital Output	2 – Outputs, 24 V DC/300mA capable.
Mounting	Screw mount
Extra Features	I2C header for expansion



[Click here](#) to download technical datasheet.

IA005 : LoRa WAN – STM MCU

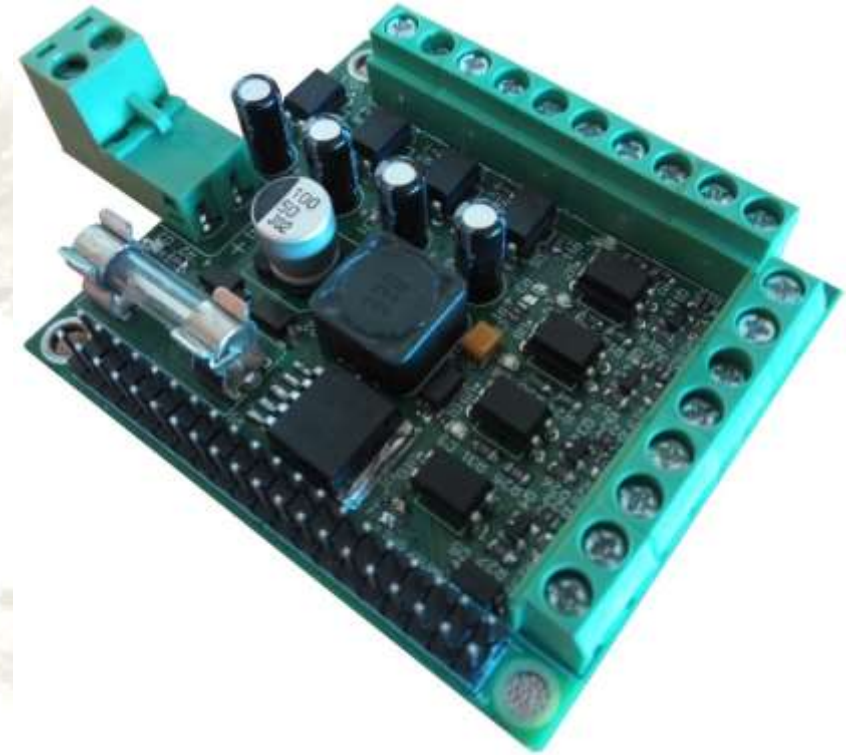
Technical Data	IA005: LoRaWAN – STM MCU
Power Input	5 V DC @ 1A
Operating System	N/A
Target Systems	Development application
Bluetooth	N/A
Wifi	N/A
RF	LoRa WAN
LoRa Frequency	862 - 878MHz, Configurable in program
MCU	STM32F103CBT6
Battery Charger	Yes, 1-Cell Li-Ion.
Mounting	Drop in / Wired
Extra Features	User programmable, On-Board Micro USB



[Click here](#) to download technical datasheet.

IA002 : RPi 4-DIO

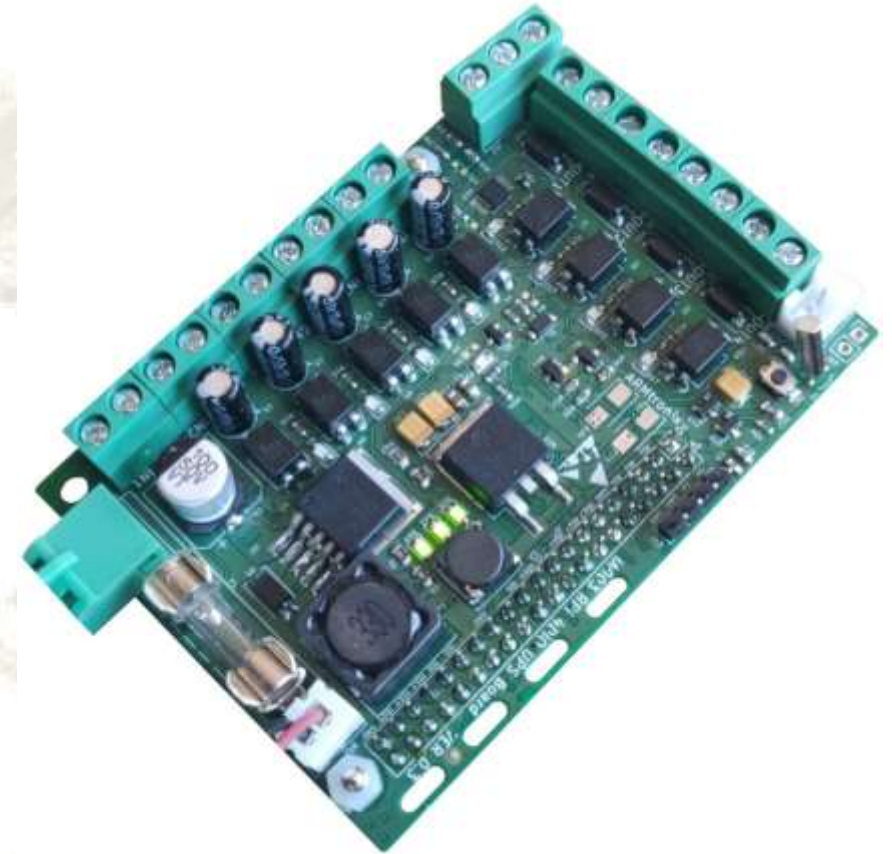
Technical Data	IA002 : RPi 4-DIO
Description	Raspberry-pi Industry Standard DIO Board
Power Input	Industry Standard 24 V DC @ 1A
Operating System	N/A
Target Systems	Raspberry Pi
Bluetooth	N/A
Wifi	N/A
Digital Input	4 – Inputs, 24 V DC Tolerable.
Digital Output	4 – Outputs, 24 V DC/300mA capable.
Mounting	Drop-in Stackup / Screw mount
Connection	Drop-in with Female header / With external FRC



[Click here](#) to download technical datasheet.

IA003 : Rpi 4DIO UPS Board

Technical Data	IA003 : RPi 4-DIO UPS Board
Description	Raspberry-pi Industry Standard DIO and UPS Board
Power Input	Industry Standard 24 V DC @ 1A
Restart Switch	Yes (Power Recycle) and Auto Reboot
Target Systems	Raspberry Pi
RTC	Yes
Li-Po Charger	Single Cell for UPS application
Digital Input	4 – Inputs, 24 V DC Tolerable.
Digital Output	4 – Outputs, 24 V DC/300mA capable.
Analog Input	2 – Inputs, 0-5V Tolerant
Mounting	Drop-in Stackup / Screw mount
Connection	Drop-in with Female header / With external FRC

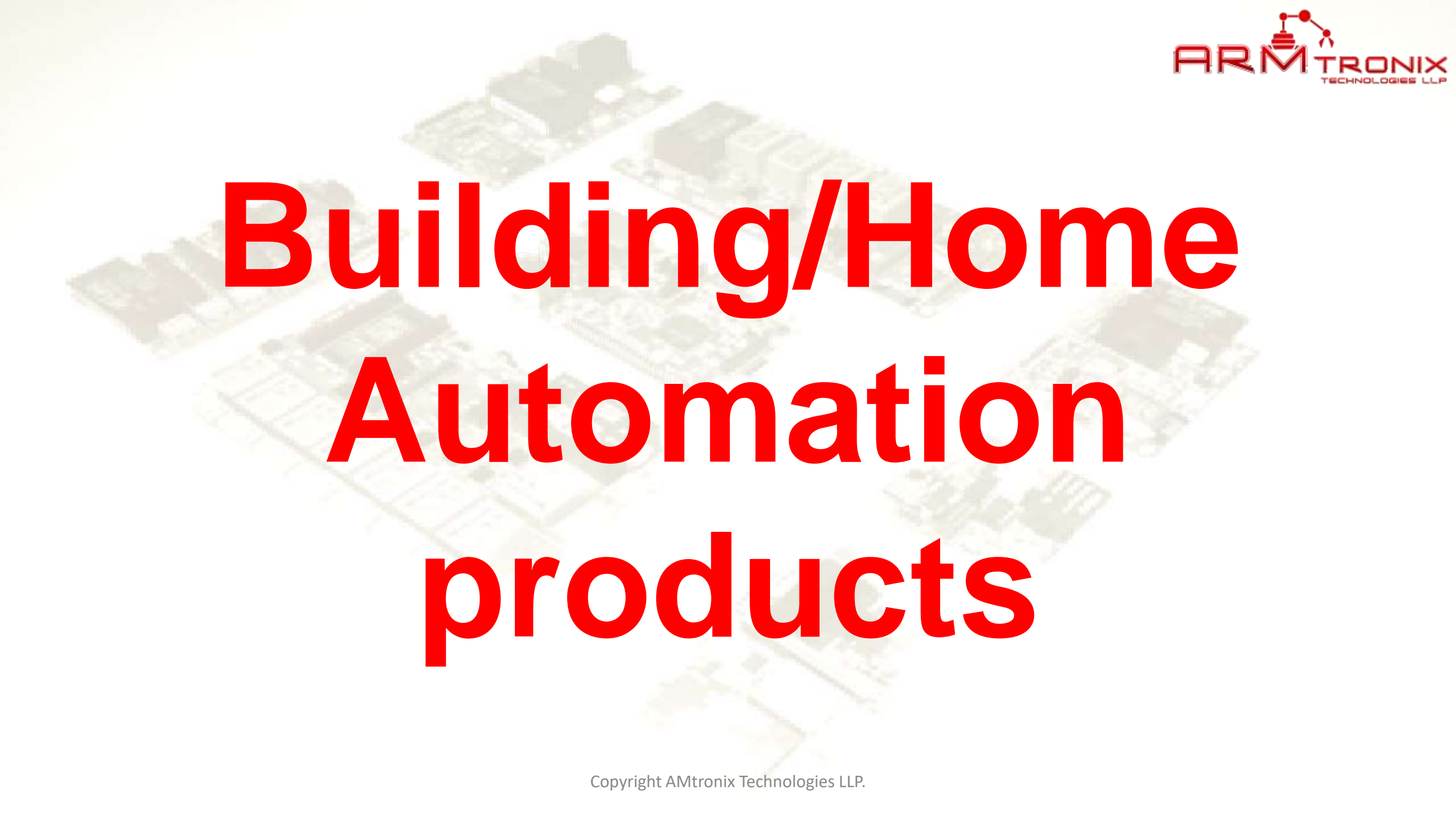


[Click here](#) to download technical datasheet.

IA001 : Wifi Industrial Button

Technical Data	IA001 : Wifi Industrial Button
Power Input	Industry Standard 24 V DC @ 0.5A
Operating System	N/A
Target Systems	MQTT Broker or Wifi Access point
Bluetooth	N/A
Wifi	802.11 b/g/n
Button	1 – Inputs, 24 V DC Tolerable.
LED Lamp	1 – Outputs, 24 V DC Tolerable.
Display	16x2 Character LCD
Mounting	Screw mount



The background of the slide is a faded, high-angle photograph of a printed circuit board (PCB) with various electronic components.

Building/Home Automation products

BA001 : Wifi Dual Dimmer Module

Technical Data	BA001 : Wifi Dual Dimmer
Description	Wifi Enabled Dual channel dimmer module
Power Input	100 to 260 V AC / 50/60Hz
Firmware	Tasmota compatible
Target Systems	MQTT Broker or Wifi Access point or Smartphone
Bluetooth	N/A
Wifi	Yes
Analog Input	2 – ADC Inputs, 0-5V DC Tolerable.
Output Channel	2 – Output, Triac Dimmer, Max 200 Watts
Loads	Fan, Incandescent Bulb.
Mounting	Wall mount using screws
Extra Feature	User programmable



[Click here](#) to download technical datasheet.

BA004 : Wifi Single Dimmer Module

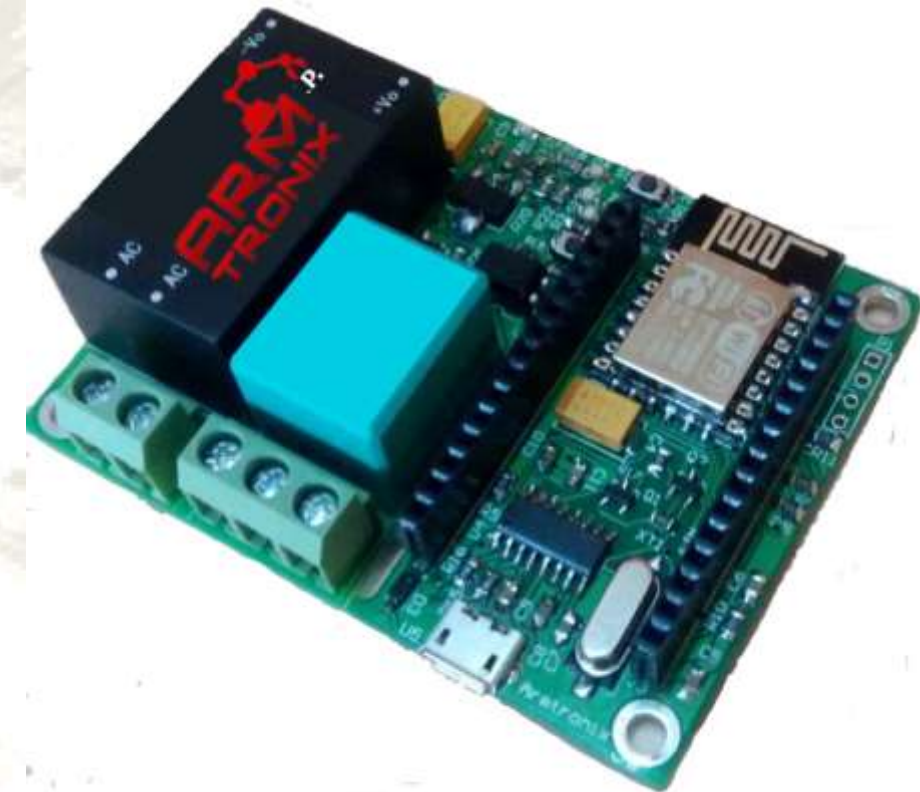
Technical Data	BA004 : Wifi Single Dimmer
Description	Wifi Enabled Single channel dimmer module
Power Input	100 to 260 V AC / 50/60Hz
Firmware	Tasmota compatible
Target Systems	MQTT Broker or Wifi Access point or Smartphone
Bluetooth	N/A
Wifi	Yes
Analog Input	1 – ADC Inputs, 0-5V DC Tolerable.
Output Channel	1 – Output, Triac Dimmer, Max 200 Watts
Loads	Fan, Incandescent Bulb.
Mounting	Wall mount using screws
Extra Feature	User programmable



[Click here](#) to download technical datasheet.

BA006 : Wifi Single Relay Board

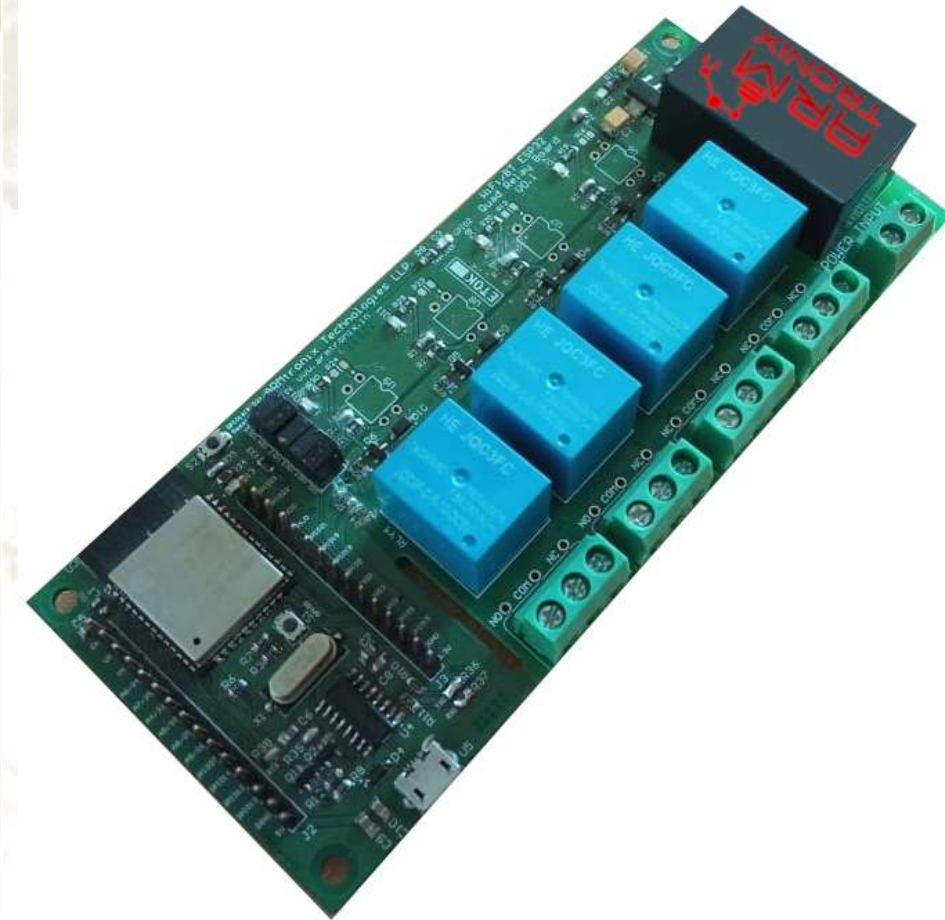
Technical Data	BA006 : Wifi Single Relay Board
Description	Wifi Enabled Single channel relay board
Power Input	100 to 260 V AC / 50/60Hz
Firmware	Tasmota compatible
Target Systems	MQTT Broker or Wifi Access point or Smartphone
Bluetooth	N/A
Wifi	Yes
NodeMCU Header	Yes
Output Channel	1 – Outputs, Relay Dry-contact, Max1000 Watts/load
Loads	Fan, Incandescent Bulb, Motor
Mounting	Wall mount using screws
Extra Feature	User programmable, Onboard micro USB



[Click here](#) to download technical datasheet.

BA011 : Wifi BT Quad Relay Board

Technical Data	BA011 : Wifi BT Quad Relay Board
Description	Wifi Enabled Four channel relay board/box
Power Input	100 to 260 V AC / 50/60Hz
Firmware	Tasmota compatible
Target Systems	MQTT Broker or Wifi Access point or Smartphone
Bluetooth	Yes
Wifi	Yes, based on ESP32S
NodeMCU Header	Yes
Output Channel	4 – Outputs, Relay Dry-contact, Max 1000 Watts/load
Loads	Fan, Incandescent Bulb, Motor
Mounting	Wall mount using screws
Extra Feature	User programmable, Onboard micro USB



[Click here](#) to download technical datasheet.

BA012 : Wifi Eight Relay Module

Technical Data	BA012 : Wifi Eight Relay Module
Description	Wifi Enabled Eight channel relay module
Power Input	100 to 260 V AC / 50/60Hz
Firmware	Tasmota compatible
Target Systems	MQTT Broker or Wifi Access point or Smartphone
Bluetooth	N/A
Wifi	Yes
NodeMCU Header	Yes
Output Channel	8 – Outputs, Relay Dry-contact, Max 1000 Watts/load
Loads	Fan, Incandescent Bulb, Motor
Mounting	Wall mount using screws
Extra Feature	User programmable, Onboard micro USB



[Click here](#) to download technical datasheet.

BA014 : Wifi 4T PWR Board

Technical Data	BA014 : Wifi 4T PWR Board
Description	Wifi Enabled Four channel Traic board with Power monitoring
Power Input	100 to 260 V AC / 50/60Hz
Firmware	Tasmota compatible
Target Systems	MQTT Broker or Wifi Access point or Smartphone
Bluetooth	N/A
Wifi	Yes
Power Monitoring	Yes, Consolidated.
Output Channel	4 – Outputs, AC, Max 200 Watts/load, 3 for Switching and 1 for Dimming
Loads	Fan, Incandescent Bulb, Motor
Mounting	Wall mount using screws
Extra Feature	User programmable, using external USB-UART



[Click here](#) to download technical datasheet.

BA015 : Wifi 2-Relay Module

Technical Data	BA015 : Wifi 2-Relay Module
Description	Wifi enabled dual relay with power monitoring module, Tasmota compatible
Power Input	100 to 260 V AC / 50/60Hz
Dimension	55x55x21 mm
Target Systems	MQTT Broker or Wifi Access point or Smartphone
Firmware	Tasmota compatible
Wifi	Yes
Power Monitoring	Yes
Output Channel	2 – Outputs, Max 1800 Watts/load
Loads	Geyser, Air Conditioner, Submersible Water Pumps
Mounting	Can be placed inside compatible switch box
Extra Feature	User programmable, using external USB-UART



[Click here](#) to download technical datasheet.

BA019 : IoT HDR PM Box

Technical Data	BA019 : IoT BT HDR PM Board
Description	Wifi Enabled single channel Heavy Duty relay with power monitoring and timestamp on board
Power Input	100 to 260 V AC / 50/60Hz
Target Systems	MQTT Broker or Wifi Access point or Smartphone
Wifi	Yes
Power Monitoring	Yes, for loads.
Digital Input (Optional)	8 – Inputs, 0 - 3.3V DC Tolerable.
Output Channel	1 – Output, AC Powered , Max 6900 Watts/load
Loads	House mains, Hotel room mains.
Mounting	Wall mount using screws
Extra Feature	Power presence detection at Input and Output, User programmable using external USB-UART converter, AC Virtual Switch, Real Time Clock(Optional).



[Click here](#) to download technical datasheet.

Contact details

ARMtronix Technologies LLP.

CTS NO. 2650, Beside Ankush Arcade,
1A, Ankush Arcade, 2nd Floor, Station Road
Hubballi, Karnataka, India - 580020

www.armtronix.in

Mob : **+91 94495 67368**

Fixed Line : **+91 836 4265368**

Email : **contactus@armtronix.in**

email for sales at : **sales@armtronix.in**

The background of the slide is a light beige color with a faint, repeating pattern of various microchips and integrated circuits, some of which are slightly blurred to create a sense of depth.

Thank You